



## QuikGraf Help Contents

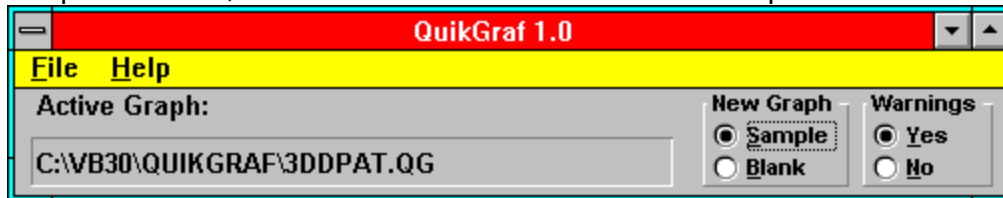
### General Information Topics

[Registration](#)

[Disclaimer](#)

### Main Program Window Elements

QuikGraf's main program window contains only a very short menu bar and a text box identifying the name of the currently active graph. Most of your work with QuikGraf will be done using [Graph Windows](#) which you create by selecting the **File New** menu command. To see a definition of QuikGraf's menu commands and the Active Graph text box, click on the window element in the picture below:



### QuikGraf Usage Hints

[Changing Data Grid Column Widths](#)

[Using the Top Left Data Grid Cell](#)

[Pie Charts](#)

[High-Low-Close Charts](#)

[Printing Multiple Copies](#)

[Printing with Laser Printers](#)

You can change the width of the columns in the Data Grid by positioning the pointer over a vertical column divider and dragging the double-headed arrow. When you save a graph the Data Grids column widths are saved as part of the grid.

For all graph types **except Pie Charts**, QuikGraf ignores the top left Data Grid cell. You can put what ever text you like in this cell. It will be saved as part of the Data Grid.

For Pie Charts the top left Data Grid cell contains the name of the first pie slice.

Pie charts use only the first 2 rows of data. Additional rows of data are ignored. The top row (Row 1) of data should contain the names of the pie slices. Row 2 should contain the values for each pie slice. Negative values are treated as zero.

High-Low-Close charts use only the first 4 rows of data. Additional rows of data are ignored.

The top row (Row 1) contains dates (or what ever variable you want on the horizontal axis.)

Row 2 contains the High Values; Row 3 the Low values, and Row 4 the Close values.

Close values must be between the High and Low values.

QuikGraf recognizes the **Copies** specification in the Print dialog window. The number you enter in the **Copies** text box will be the number of copies of the selected graph QuikGraf will print.

If the colors in a QuikGraf graph print too dark, try setting the Print Quality option in DiskTraks Print dialog to Medium or Low. Also, try **decreasing** your laser printers resolution setting. Do this by selecting the Setup... button in QuikGraf's Print dialog, and then select the Options... button in the Print Setup dialog.

The wide variety of laser printer capabilities makes it impossible to specify the optimum settings for laser printers in general. You should try different settings to see what works best for your printer.

## **File Menu Items**

**New** Displays a new Graph Window.

**Exit** Ends QuikGraf and returns you to the Windows Program Manager. As the closing screen indicates, if you use QuikGraf on a regular basis you are obligated to send the registration fee to Peninsula Software



## **Warnings** Radio Buttons

Specifies whether QuikGraf will issue (**Yes** button) or not issue (**No** button) warning messages when you take actions that may erase un-saved data. An example of such an action is eliminating a row of data by reducing the number of rows of data in the data grid.

## **New Graph** Radio Buttons

Specify whether a new Graph Window (created with the **File New** menu command) will be displayed with a **Sample** graph and data in it or as a **Blank** graph with no data.

**Active Graph:**

This text box displays the name (and path, if it exists) of the currently active Graph Window.

If there is no active Graph Window this text box displays **<none>**.

**Save**

Saves the graph in the currently active Graph Window to disk. The file name used is the one in the title bar of the active Graph Window.

**Print**

Displays the standard Windows Print dialog box allowing you to print the currently active graph. Printing occurs on the default Windows printer, but you can select the Setup button to change this.

The size and shape of the printed image is determined by the size and shape of the graph in the active Graph Window. You can use the **Max** button in the Graph Window to increase the size of the displayed graph and its printed image.

**Duplicate**

Creates a new Graph Window containing a duplicate of the current graph. Use this command to facilitate comparing changes to a graph's specifications.

You can make as many duplicates as you like.

If you are working with several duplicates, be careful when saving to ensure you are saving the version you really want to keep.

**Clear**

Clears the currently active Graph Window of all data. If the window is displaying a graph that has not been saved you will be prompted to save before clearing occurs.

### **Save as WMF...**

Displays the standard Windows Save As dialog box with the default file extension **.WMF**. This dialog allows you to save the currently active graph as a Windows Meta File disk file. This type of file can be edited by graphic image editors such as those included with Word for Windows, PowerPoint, etc.

You can select any file path from the Disk and Directory dialog boxes.

You can use any file name and extension you like, but it is strongly recommended that you **not change** the **.WMF** default file extension.



### **Save as BMP...**

Displays the standard Windows Save As dialog box with the default file extension **.BMP**. This dialog allows you to save the currently active graph as a Windows Bit Map disk file. This type of file can be edited by paint programs such as Windows Paintbrush.

You can select any file path from the Disk and Directory dialog boxes.

You can use any file name and extension you like, but it is strongly recommended that you **not change** the **.BMP** default file extension.

### **Save As...**

Displays the standard Windows Save As dialog box with the default file extension **.QG**. This dialog allows you to save the currently active graph as a QuikGraf data file having the file name you enter. After saving you can close the active Graph Window and re-load it into a QuikGraf Graph Graph Window at a later time.

You can select any file path from the Disk and Directory dialog boxes. **Usage hint:** save all QuikGraf data files in the same directory as the QuikGraf program. You can use any file name and extension you like, but it is strongly recommended that you **not change** the **.QG** default file extension.

**Open**

Displays the standard Windows File Open dialog box showing all files with extension **.QG** for selection. Double-click a file name to open it and load it in to the active Graph Window.

## Graph Menu Selection

Click on the command in the Graph menu to see a definition of its function.

<u>O</u> pen	Ctrl+O
<u>S</u> ave	Ctrl+S
Save <u>A</u> s...	Ctrl+A
Save As <u>B</u> MP...	Ctrl+B
Save As <u>W</u> MF...	Ctrl+W
<u>C</u> lear	Ctrl+C
<u>D</u> uplicate	Ctrl+D
<u>P</u> rint...	Ctrl+P



This is the Colors window which allows you to specify the colors used for the graph in the active Graph Window.

To ensure compatibility with all systems, QuikGraf supports only the sixteen standard Windows colors. These are displayed in the 4 x 4 array at the bottom of the Colors window.

Click on an item in the Colors window to see a definition of its function.

Displays the color that will be used for the item shown in the drop down list box that is directly beneath the Sample Text window.

Displays the item for which you are currently setting the color. The first item in the list is always **Main Graph** which refers to the Graph Window itself. The other items in the list box are determined by the data items displayed in the graph in the active Graph Window.

The **Foreground Text/Background** radio buttons are enabled only if the drop down list box specifies **Main Graph**. Use these buttons to specify whether you are setting the color for the graph background or the text that appears on the graph.

**Usage Hint:** set the background color first, then the foreground text color.



The **Solid/Dithered.../Greyscale** radio buttons specify whether you want solid colors, dithered colors, or greyscale colors. These settings apply to all the non-text items in the current graph.

The actual appearance of these items is determined by the type of video controller in your system and the number of colors it supports. You should experiment with each setting to see how it looks on your screen.

Also, depending on your printer, Greyscale colors may print better (or worse) than Solid or Dithered colors.

After specifying the graph item for which you want to set the color, simply click the desired color square in the color array. The sample rectangle at the top of the Colors window will change to this color. You can see the immediate effect of this change on the graph by clicking the **Graph** button in its Graph Window, or you can set the colors for several items and then click the **Graph** button to see the effect of all changes at once.

Closes the Colors window.

## **Titles**

Displays the Titles window which allows you to specify the three types of titles that can appear on a graph. To enter or change the text of a title, simply click in its text window and key in the text you want.

To eliminate a title, delete all its text.

To close the Titles window, click its **Close** button.

The three types of titles are:

- Graph Title**      Text that appears at the top center of the graph
- Left Title**        Text that appears to the left of the graph
- Bottom Title**     Text that appears at the bottom center of the graph

## Specs

Graph Specs	
Type	Font Target
2D Bar	Graph Title
Style	Font Family
Vertical	Swiss
Area Fill	Font Size
Solid	Normal
Grid Lines	Font Style
None	Plain
Axis Labels	Legend
Both	Yes
Close	

This is the Graph Specs window which allows you to specify most of the characteristics of the graph in the active Graph Window.

Click on an item in the picture of the Graph Specs window to see a definition of its function.

Note that, depending on the type of graph specified, not all the options may actually apply.

Specifies the type of graph to be displayed.

Specifies whether the various graph elements (bars, surfaces, pie sections, etc.) are painted with solid colors or patterns. Solid colors look best for displays, but patterns are better for printing (unless you have a color printer, in which case solids are better.)

For each type of graph, lists the available styles that can be displayed. There are different styles for each of the different Types of graph.



Specifies whether no, horizontal, vertical, or both horizontal and vertical grid lines are drawn on a graph.

Specifies whether no, horizontal, vertical, or both horizontal and vertical axis labels are displayed on a graph.

Specifies which text item on the graph to apply the settings from the Font Family, Font Size, and Font Style drop down list boxes. The possible choices are

**Graph Title:** the title text displayed at the top of the graph

**Other Titles:** the titles displayed at the bottom and left side of the graph

**Labels:** the axis label text

**Legend:** the legend text

**All Text:** applies the Font selections to all text shown on the graph

**Usage hint:** initially, try setting all text the same by choosing **All Text**, and then modifying only the text items you want to be different

Specifies the font family to be used for the text item specified in the **Font Target** box. The actual font used depends on the font mappings specified in your systems WIN.INI file.

Specifies the size of the font for the test item displayed in the **Font Target** box.

Specifies the type of the font for the test item displayed in the **Font Target** box.

Specifies whether or not the graph should include a legend.

Closes the Graph Specs window.



**ClipBoard**

Displays the Clipboard menu selections which allow you to copy an image of the current graph to the Windows clipboard. Once on the clipboard, you can paste the image directly into some other Windows application.

The graphs image can be copied in two formats: Windows Bit Map (BMP) and Windows Meta File (WMF). Simply select the format you want from the two menu commands available.

## **Data Grid**

QuikGraf's data grid is where you enter/update the data that creates the graph.

The Data Grid cell where data editing will occur is called the Edit Cell and is colored light blue (Cyan).

To enter text into the Edit Cell, simply start typing. Your data will be placed in the Edit Cell when you press the Enter key.

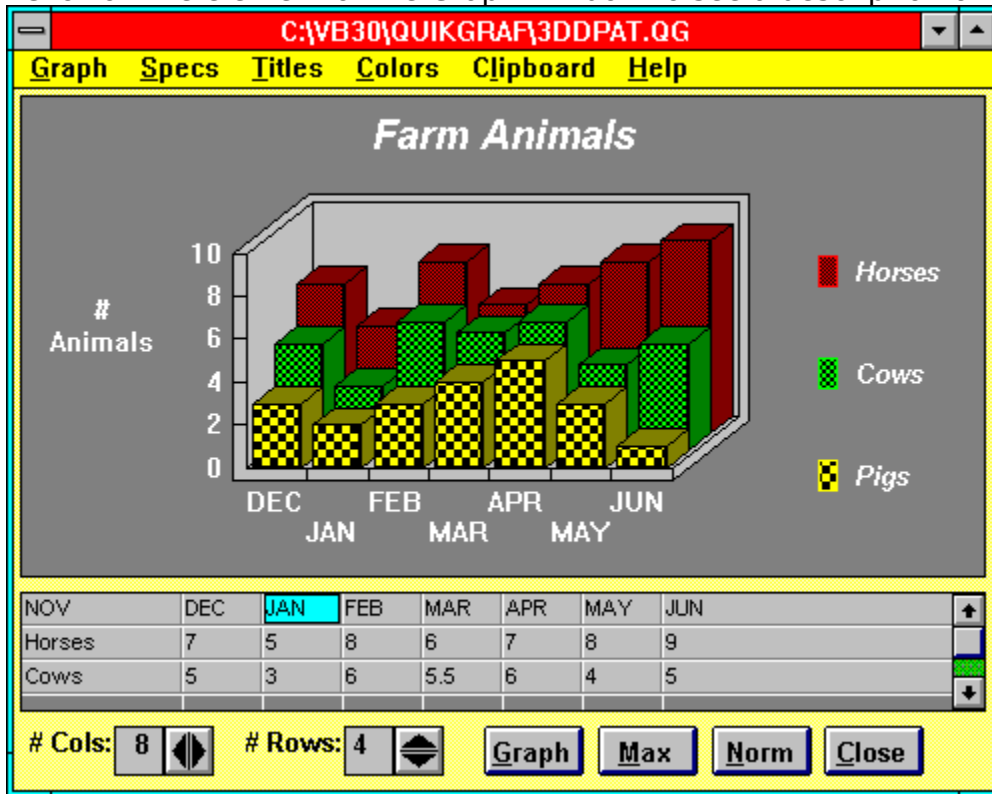
To move the Edit Cell, point to a different Data Grid cell and click the left pointer button, or use the keyboard arrow keys or Tab key.

To see the results of your data entry, click the **Graph** button. You can make multiple Data Grid entries before clicking the **Graph** button to see their effect all at one.

Cells at the bottom of the Data Grid that are dark gray in color are not available to hold data. If you need additional rows of data cells, click on the up-pointing **# Rows:** button.

# Graph Window

Click on the element of the Graph Window to see a description of its function.



This is the graph that QuikGraf creates based on the graph specifications and Data Grid information. Currently there are no selectable items in the graph itself.

Scroll Bars appear in the Data Grid whenever its screen size is too small to completely display all its rows and columns. Use the scroll bars to scroll the data grid horizontally or vertically.

Closes the current Graph Window. If you have not saved the graphs data to a disk file, QuikGraf will query you to do so.

Returns the size of the graph to normal size, thus making the Data Grid visible.

Increases the size of the graph to maximum size. This action will cause the graph to cover up the Data Grid. Click the **Norm** button to return the graph to normal size.



Generates a graph based on the current values in the Data Grid and Specification Windows and displays it in the current Graph Window.

Increases the number of rows in the Data Grid by 1. The new row of cells is added at the bottom of the grid.

Decreases the number of rows in the Data Grid by 1 by eliminating the bottom row of cells.

Increases the number of columns in the Data Grid by 1. The new column is added at the right side of the grid.

Decreases the number of columns in the Data Grid by 1 by eliminating the column at the right side of the grid.

Displays the number of rows in the Data Grid.

Displays the number of columns in the Data Grid.

## **Help Menu Items**

**Help**      **Shortcut Key:** F1 (Function Key 1)

Invokes the Windows Help engine with QuikGraf's Help file active.

### **About**

If you are using a nonregistered copy of QuikGraf, selecting this option displays the Registration Motivator dialog box that requires you to enter the word "register". After doing so, a message window is displayed giving some information about the program and how to contact the program author.

If you are using a registered version of QuikGraf, the Registration Motivator dialog box does not appear, and the message window displays the name of the person to whom the program is registered, along with the other program related information.



## **Registration Motivator**

A dialog box requiring you to enter the word **register** before you can continue using QuikGraf

The purpose of the Registration Motivator is to encourage regular users of QuikGraf to register their shareware copy, but to not interfere excessively with those performing an evaluation of the program.

Registered versions of QuikGraf do not display the Registration Motivator dialog box.

## **Quirk**

A characteristic of a program that causes it to function in an unexpected and/or undesirable way. Quirks are sometimes called **features** (by programmers) and **bugs** (by users).

**Dithered**

A technique used by Windows to approximate a color by using a pattern of its basic 16 colors.

## REGISTRATION

QuikGraf is a shareware program. This means that you can evaluate it for your own use and distribute it to others (for their evaluation) at no charge. But, if you decide to use QuikGraf on a regular basis, you are obligated to register it with the program author. Select the following country locations for information about how to register QuikGraf:

USA Peninsula Software

All Others Peninsula Software

Registered users will receive a 1.44 MB 3 1/2" diskette containing the latest version of QuikGraf that has been registered specifically to you.

Registered copies of the program do not have the Registration Motivator dialog box and contain the registered users name in the "About" screen. Otherwise, registered versions of the program are identical to the shareware version.

Thank you for supporting QuikGraf and the shareware concept.

**Peninsula Software**

Select "File-Print Topic" from the menu bar to print this form.

**QuikGraf Ver 1.00 Registration Form**

**Name:** \_\_\_\_\_

**Company:** \_\_\_\_\_

**Address:** \_\_\_\_\_

\_\_\_\_\_

**City:** \_\_\_\_\_ **State:** \_\_\_\_\_

**Country:** \_\_\_\_\_ **ZIP/Postal Code:** \_\_\_\_\_

**Method of payment:**

\_\_\_ check for \$40.00 (US) made payable to Peninsula Software

\_\_\_ Visa or MasterCard credit card (\$40.00 total)

Credit Card type: \_\_\_ Visa \_\_\_ Mastercard

Credit Card Number: \_\_\_\_\_

Expiration Date: \_\_\_\_\_

Signature: \_\_\_\_\_ Date: \_\_\_\_\_

**Comment:** \_\_\_\_\_

\_\_\_\_\_

**Send to: Peninsula Software  
28510 Blythewood Drive  
Palos Verdes CA 90274**

## **Disclaimer**

No guarantee is made, expressed, or implied, about the use of or results produced by this program. Should this program prove defective, the user, purchaser, or evaluator assumes the responsibility for all costs of all necessary service, repair, or corrective actions, and any associated incidental or consequential damages. In no event will Peninsula Software and/or the program author ever be liable for any costs or damages whatsoever arising out of the use of or the inability to use this program.

